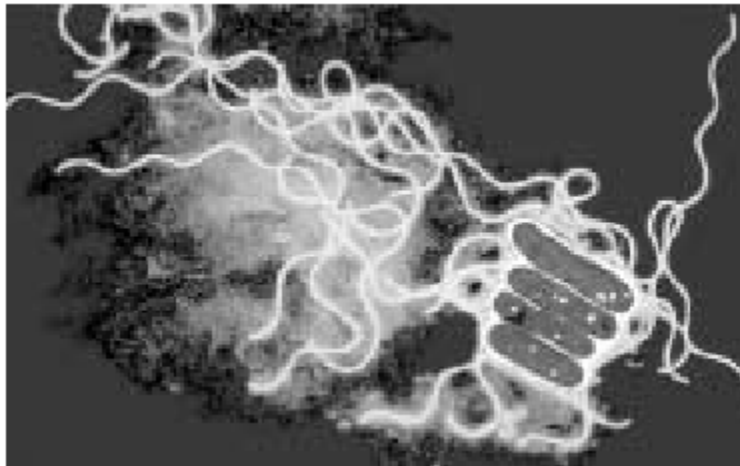


Legionnaires' Disease - Where does it come from?

The bacterium that causes Legionnaires' disease is widespread in nature.



Legionnaires' Disease - Where does it come from?

The bacterium that causes Legionnaires' disease is widespread in nature. It mainly lives in water, for example ponds, where it does not usually cause problems. Outbreaks occur from purpose-built water systems where temperatures are warm enough to encourage growth of the bacteria, e.g. in cooling towers, evaporative condensers and whirlpool spas (tradename Jacuzzi) and from water used for domestic purposes in buildings such as hotels.

Most community outbreaks in the UK have been linked to installations such as cooling towers or evaporative condensers, which can spread droplets of water over a wide area. These are found as part of air-conditioning and industrial cooling systems.

Updated 13.1.04 - Parts of this document © Crown Copyright 2004 - originally produced and published by the UK's Health & Safety Executive.

Additional Information & Expert Assistance

For further information and expert assistance please contact:

Legionella Control International
Quay West
Trafford Wharf Road
Manchester M17 1HH
United Kingdom

Telephone: +44 (0) 161 240 2245

E-mail: info@legionellacontrol.com.